

ALB Fasteners
Fixations

The professional way of fixing

Security Range



**Leverings-
programma**

Don't lose it . . .



How to order

1. Welke type beveiliging ?
Permanent zie logo 
Niet-permanent zie logo 
2. Welke maat ?
3. Welke materiaal ?
4. Welke hoeveelheden nodig ?
5. Verpakking in bulk of doosjes ?
6. Bevestigingsgereedschappen nodig ?
7. Direkte levering op werf ?



2-Hole

2-Hole security screws (sometimes known as Snake Eye® or Pig Nose) are designed for low to medium torque applications. They have two holes drilled into the head which require a unique 2-pin driver to install and remove. With an aesthetically pleasing head design, they are often specified by architects and designers. Available from stock in AB type self tapping screws and metric machine screws as shown below.

Requires matching tooling *See page 39*



INSERT BIT



ONE-PIECE SCREWDRIVER

Manufactured in A2 stainless steel.



COUNTERSUNK ■ AB TYPE SELF TAPPING SCREWS BOX QTY 100



GAUGE	LENGTH	3/8"	1/2"	5/8"	3/4"	1"	1 1/4"	1 1/2"	2"	2 1/2"	3"	DRIVER SIZE
		9.5mm	13mm	16mm	19mm	25mm	32mm	38mm	50mm	63mm	75mm	
4	2.9mm	●	●		●	●	●	●				TH3
6	3.5mm	●	●	●	●	●	●	●	●			TH4
8	4.2mm	●	●	●	●	●	●	●	●			TH5
10	4.8mm		●	●	●	●	●	●	●	●		TH6
12	5.5mm					●	●	●	●			TH7
14	6.3mm			●	●	●	●	●	●			TH8

PAN HEAD ■ AB TYPE SELF TAPPING SCREWS BOX QTY 100

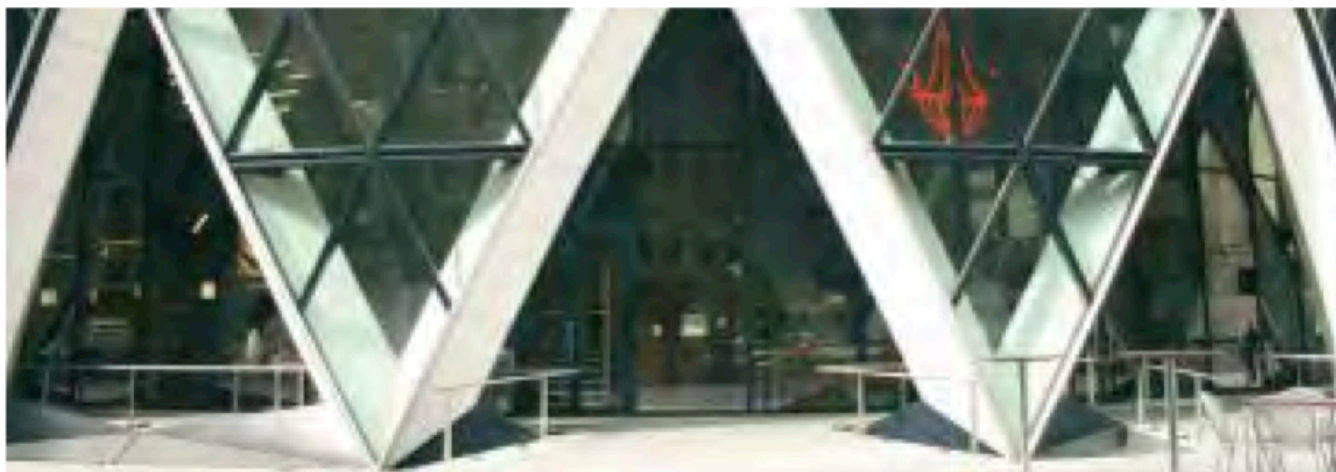


GAUGE	LENGTH	3/8"	1/2"	5/8"	3/4"	1"	1 1/4"	1 1/2"	2"	2 1/2"	3"	DRIVER SIZE
		9.5mm	13mm	16mm	19mm	25mm	32mm	38mm	50mm	63mm	75mm	
4	2.9mm	●	●	●	●	●		●				TH3
6	3.5mm	●	●	●	●	●	●	●	●			TH4
8	4.2mm	●	●	●	●	●	●	●	●			TH5
10	4.8mm	●	●	●	●	●	●	●	●	●		TH6
12	5.5mm		●			●	●	●	●			TH7
14	6.3mm			●	●	●	●	●	●			TH8

COUNTERSUNK ■ METRIC MACHINE SCREWS BOX QTY 100



GAUGE	LENGTH	8mm	10mm	12mm	16mm	20mm	25mm	30mm	35mm	40mm	DRIVER SIZE
		M3	●	●	●	●	●	●	●	●	
M4			●	●	●	●	●	●	●		TH5
M5				●	●	●	●	●	●		TH6
M6				●	●	●	●	●		●	TH8
M8		TO ORDER ONLY									N8
M10		TO ORDER ONLY									N14



PAN HEAD ■ METRIC MACHINE SCREWS

BOX QTY 100

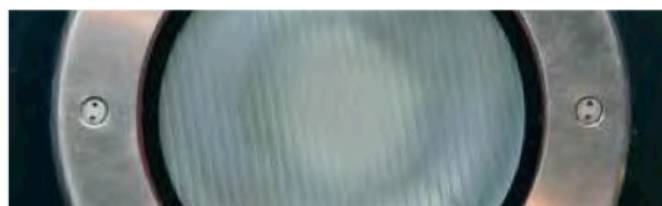


GAUGE \ LENGTH	LENGTH										DRIVER SIZE
	6mm	8mm	10mm	12mm	16mm	20mm	25mm	30mm	35mm	40mm	
M3			●	●	●						TH3
M4	●		●	●	●	●	●	●			TH5
M5				●	●	●	●	●			TH6
M6				●	●	●	●	●		●	TH8
M8	TO ORDER ONLY										N8
M10	TO ORDER ONLY										N14

RAISED COUNTERSUNK ■ METRIC MACHINE SCREWS BOX QTY 100



GAUGE \ LENGTH	LENGTH					DRIVER SIZE
	12mm	25mm	30mm	40mm	50mm	
M3.5	●	●	●	●	●	TH4



DID YOU KNOW . . .

- Self Tapping Screws can be substituted for Woodscrews
- The entire roof glazing at Canary Wharf Station is held by 2-Hole fasteners
- Imperial Machine Screws are widely used in computing equipment

2-HOLE MADE TO MEASURE SPECIALS
(Subject to minimum order quantities)



- Male & Female Bolts
- Grub Screws
- Large Disc Head
- Glass Screws
- Imperial Machine Screws unc & unf

SEE SPECIALS PAGES 42-45





Pin Hex

Pin Hex security screws have been manufactured with an internal pin within the standard socket aperture. This prevents removal with standard hexagon keys. This system is suitable for medium torque applications and is one of the most difficult screws to remove without the matching driver. Available from stock in AB type self tapping screws and metric machine screws as shown below and anchor systems (see pages 40-41).

Requires matching tooling *See page 40*



INSERT BIT

KEY WRENCH



Manufactured in A2 stainless steel.

Pin Hex

COUNTERSUNK ■ AB TYPE SELF TAPPING SCREWS

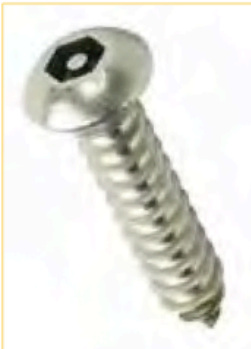
BOX QTY 100



GAUGE	LENGTH	3/8"	1/2"	5/8"	3/4"	1"	1 1/4"	1 1/2"	2"	2 1/2"	3"	DRIVER SIZE
		9.5mm	13mm	16mm	19mm	25mm	32mm	38mm	50mm	63mm	75mm	
6	3.5mm	●	●	●	●	●		●				H30
8	4.2mm		●	●	●	●	●	●	●			H40
10	4.8mm		●	●	●	●	●	●	●	●		H40
12	5.5mm				●	●	●	●	●			H40
14	6.3mm				●	●	●	●	●			H40

BUTTON HEAD ■ AB TYPE SELF TAPPING SCREWS

BOX QTY 100



GAUGE	LENGTH	3/8"	1/2"	5/8"	3/4"	1"	1 1/4"	1 1/2"	2"	2 1/2"	3"	DRIVER SIZE
		9.5mm	13mm	16mm	19mm	25mm	32mm	38mm	50mm	63mm	75mm	
6	3.5mm	●	●	●	●	●		●				H30
8	4.2mm	●	●	●	●	●	●	●	●			H40
10	4.8mm		●	●	●	●	●	●	●	●		H40
12	5.5mm				●	●	●	●	●			H40
14	6.3mm				●	●	●	●	●			H40

COUNTERSUNK ■ METRIC MACHINE SCREWS

BOX QTY 100

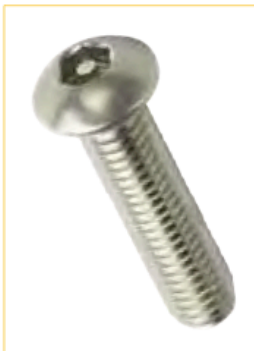


GAUGE	LENGTH	8mm	10mm	12mm	16mm	20mm	25mm	30mm	35mm	40mm	50mm	60mm	DRIVER SIZE
	M3			●	●	●	●						
M4		●	●	●	●	●	●	●		●			H40
M5		●	●	●	●	●	●	●		●	●	●	H40
M6		●	●	●	●	●	●	●		●	●	●	H40
M8				●	●	●	●	●	●	●	●	●	H50
M10						●	●	●		●	●	●	H60
M12						●	●	●		●	●	●	H80



BUTTON HEAD ■ METRIC MACHINE SCREWS

BOX QTY 100



LENGTH GAUGE	LENGTH														DRIVER SIZE
	8 mm	10 mm	12 mm	16 mm	20 mm	25 mm	30 mm	35 mm	40 mm	50 mm	60 mm	80 mm	100 mm	120 mm	
M3		●	●	●	●										H20
M4	●	●	●	●	●	●	●		●						H40
M5		●	●	●	●	●	●		●	●	●				H40
M6		●	●	●	●	●	●		●	●	●				H40
M8			●	●	●	●	●	●	●	●	●				H50
M10				●	●	●	●		●	●	●		●		H60
M12					●	●	●		●	●	●	●	●		H80

RAISED COUNTERSUNK ■ METRIC MACHINE SCREWS

BOX QTY 100



LENGTH GAUGE	LENGTH							DRIVER SIZE
	12mm	20mm	25mm	30mm	40mm	50mm	60mm	
M3.5	●	●	●	●	●	●	●	H30



DID YOU KNOW . . .

- Self Tapping Screws can be substituted for Woodscrews
- Hafren go the extra length . . . M10 x 100mm in Button Head Machine Screws from stock

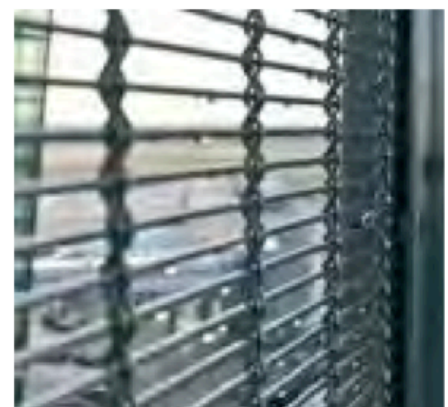
PIN HEX SOCKET MADE TO MEASURE SPECIALS

(Subject to minimum order quantities)



- Socket Cap Screws
- Grub Screws
- Barrel Nuts
- Other materials
- Plating to any finish

SEE SPECIALS PAGES 42-45





6-LOBE PIN SCREWS

6-Lobe Pin

6-Lobe Pin security screws (sometimes known as Star Drive Pin, Pin Torx, or Resistorx®) are suitable for higher torque applications. These are manufactured with a central pin inside the six-lobe recess preventing removal with standard torx tools. Stocked in the largest range available including AB type self tapping screws, metric machine screws, self drilling screws (see page 10-11) and anchor systems (see page 39).

Requires matching tooling *See page 47*

Head dimensions *See page 49*



INSERT BITS



KEY WRENCH



ONE-PIECE SCREWDRIVER

Manufactured in A2 stainless steel.

6-Lobe Pin

COUNTERSUNK ■ AB TYPE SELF TAPPING SCREWS

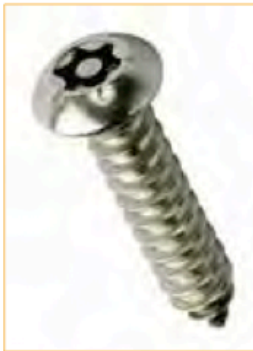
BOX QTY 100



GAUGE	LENGTH	1/2"	5/8"	3/4"	1"	1 1/4"	1 1/2"	2"	2 1/2"	3"	4"	DRIVER SIZE
		13mm	16mm	19mm	25mm	32mm	38mm	50mm	63mm	75mm	100mm	
4	2.9mm	●		●								T10
6	3.5mm	●	●	●	●	●	●					T15
8	4.2mm	●	●	●	●	●	●	●				T20
10	4.8mm	●	●	●	●	●	●	●	●	●	●	T25
12	5.5mm				●	●	●	●	●	●		T27
14	6.3mm			●	●	●	●	●				T30

BUTTON HEAD ■ AB TYPE SELF TAPPING SCREWS

BOX QTY 100



GAUGE	LENGTH	3/8"	1/2"	5/8"	3/4"	1"	1 1/4"	1 1/2"	2"	2 1/2"	3"	DRIVER SIZE
		9.5mm	13mm	16mm	19mm	25mm	32mm	38mm	50mm	63mm	75mm	
6	3.5mm		●	●	●	●		●				T10
8	4.2mm	●	●	●	●	●	●	●	●			T15
10	4.8mm		●	●	●	●	●	●	●			T25
12	5.5mm					●	●	●	●	●	●	T27
14	6.3mm				●	●	●	●	●			T30

COUNTERSUNK ■ METRIC MACHINE SCREWS

BOX QTY 100

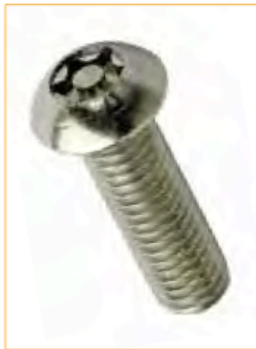


GAUGE	LENGTH	6mm	8mm	10mm	12mm	16mm	20mm	25mm	30mm	40mm	50mm	55mm	60mm	70mm	80mm	DRIVER SIZE
	M3		●	●	●	●	●	●	●							
M4		●	●	●	●	●	●	●	●	●	●			●		T20
M5			●	●	●	●	●	●	●	●	●				●	T25
M6			●	●	●	●	●	●	●	●	●				●	T30
M8						●	●	●	●	●	●	●	●		●	T40
M10													●	●	●	T45



BUTTON HEAD ■ METRIC MACHINE SCREWS

BOX QTY 100



LENGTH GAUGE	6	8	10	12	16	20	25	30	35	40	50	55	60	65	70	75	80	100	DRIVER SIZE
	mm	mm	mm	mm	mm	mm	mm	mm	mm	mm	mm	mm	mm	mm	mm	mm	mm	mm	
M3	●	●	●	●	●	●	●												T10
M4	●	●	●	●	●	●	●	●		●	●								T20
M5		●	●	●	●	●	●	●		●	●								T25
M6			●	●	●	●	●	●	●	●	●		●				●		T30
M8				●	●	●	●	●	●	●	●	●	●			●	●	●	T40
M10						●	●	●	●	●	●		●	●	●		●		T45

RAISED COUNTERSUNK ■ METRIC MACHINE SCREWS BOX QTY 100



LENGTH GAUGE	12mm	20mm	25mm	30mm	40mm	50mm	DRIVER SIZE
	M3.5	●	●	●	●	●	



DID YOU KNOW . . .

- Self Tapping Screws can be substituted for Woodscrews
- Hafren go the extra length again . . . No.12 x 3" Button Head and Countersunk Self Tappers ex-stock
- Health and safety even stipulate that handles on kayaks must have security screws on them

**6-LOBE PIN MADE TO MEASURE SPECIALS
(Subject to minimum order quantities)**



- Can be made in steel and plated to your specification
- Barrel Nuts
- Grub Screws
- Concrete Tapping Screws
- Tri-Lobular Metal Thread Screws

SEE SPECIALS PAGES 42-45





6-LOBE PIN SELF DRILLING SCREWS



6-Lobe Pin Self Drilling Screws

Self drilling screws manufactured in a 6-Lobe Pin security drive (sometimes known as Star Drive Pin, Pin Torx or Resistorx[®]). Self drilling tips provide fast and easy application eliminating the need to pre-drill.

Requires matching tooling *See page 40*



INSERT BITS

Manufactured in case hardened Delta Protekt[®] plated steel.

Self Drilling Screws

COUNTERSUNK ■ DELTA PROTEKT[®] BOX QTY 100



GAUGE	LENGTH	1/2"	3/4"	1"	1 1/2"	2"	DRIVER SIZE
		13mm	19mm	25mm	38mm	50mm	
8	4.2mm	●	●	●	●		T20
10	4.8mm		●	●	●	●	T25
12	5.5mm			●	●	●	T27



PAN HEAD ■ DELTA PROTEKT[®] PLATED BOX QTY 100



GAUGE	LENGTH	1/2"	3/4"	1"	1 1/2"	2"	DRIVER SIZE
		13mm	19mm	25mm	38mm	50mm	
8	4.2mm	●	●	●	●		T20
10	4.8mm		●	●	●	●	T25
12	5.5mm			●	●	●	T27



SELF DRILLING SCREWS TECHNICAL INFO (mm)

HEAD STYLE	GAUGE	No. 8	No. 10	No. 12
		4.2mm	4.8mm	5.5mm
COUNTERSUNK HEAD		7.9	9.3	10.6
		3.0	3.2	3.7
PAN HEAD		7.9	9.3	10.6
		2.9	3.4	3.9
POINT SIZE		2	3	3
MATERIAL THICKNESS Mild Steel up to (mm)		1 + 2	2 + 2	2 + 3

All sizes shown are without min and max tolerances and are guide sizes.



6-Lobe Pin Barrel Nuts

Barrel Nuts (sometimes known as Inter-Screws) are internally threaded parts that are ideal for clamping two pieces of material together when used with machine screws. Manufactured with a 6-Lobe Pin security drive.

Requires matching tooling *See page 40*



Manufactured in A2 stainless steel.

Barrel Nut

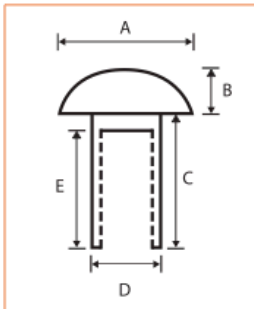
BUTTON HEAD ■ A2 STAINLESS STEEL BOX QTY 100



LENGTH GAUGE	LENGTH						DRIVER SIZE
	10mm	12mm	16mm	20mm	25mm	30mm	
M4	●						T20
M5	●						T25
M6		●			●		T30
M8			●			●	T40
M10				●			T45



BARREL NUTS TECHNICAL INFO (mm)



DIMENSION	SIZE	M4	M5	M6	M5	M8	M8	M10
		10mm	10mm	12mm	25mm	16mm	30mm	20mm
A		9	10	12	12	14.3	14.3	18
B		2.8	3.3	4.4	4.4	5	5	5.8
C		9	10	12	25	16	30	20
D		5.2	6.3	8	8	10	10	12.5
E		6	6	9	20	12	25	14

IDEAL FOR . . .

- Playground Equipment
- Ironmongery
- Door & Furniture Fixings
- Cabinet Makers
- Signage
- Glass Fixings
- Street Furniture





Clutch Head

Clutch Head one-way screws only operate in a clockwise motion using a standard screwdriver. Anti-clockwise is prohibited due to the shape of the drive feature.

No specialist tools required, use standard slotted screwdriver



Manufactured in bright zinc plated (CR-3) hardened steel (woodscrews) and A2 stainless steel (self tappers and machine screws).



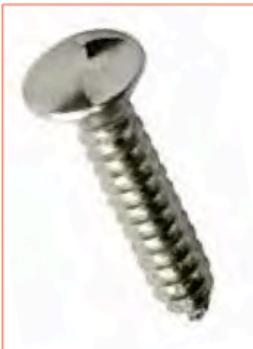
COUNTERSUNK ■ BRIGHT ZINC PLATED ■ TWINTHREAD WOODSCREWS **BOX QTY 200**



GAUGE	LENGTH	3/4"	1"	1 1/4"	1 1/2"	2"	2 1/2"	3"
		19mm	25mm	32mm	38mm	50mm	63mm	75mm
6		●	●					
8		●	●	●	●	●		
10			●	●	●	●		
12					●	●	●	●

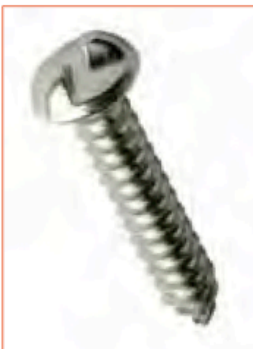


COUNTERSUNK ■ A2 STAINLESS STEEL ■ AB TYPE SELF TAPPING SCREWS **BOX QTY 100**



GAUGE	LENGTH	1/2"	5/8"	3/4"	1"	1 1/4"	1 1/2"	2"	2 1/2"	3"	REMOVAL TOOL
		13mm	16mm	19mm	25mm	32mm	38mm	50mm	63mm	75mm	
6	3.5mm			●	●						RT41
8	4.2mm	●		●	●	●	●	●			RT51
10	4.8mm				●	●	●	●			RT51

ROUND HEAD ■ A2 STAINLESS STEEL ■ AB TYPE SELF TAPPING SCREWS **BOX QTY 100**



GAUGE	LENGTH	1/2"	5/8"	3/4"	1"	1 1/4"	1 1/2"	2"	2 1/2"	3"	REMOVAL TOOL
		13mm	16mm	19mm	25mm	32mm	38mm	50mm	63mm	75mm	
6	3.5mm	●		●	●						RT41
8	4.2mm	●		●	●	●	●	●			RT51
10	4.8mm	●		●	●	●	●	●			RT51
14	6.3mm	●		●	●		●	●		●	RT61



BUTTON HEAD ■ A2 STAINLESS STEEL BOX QTY 100



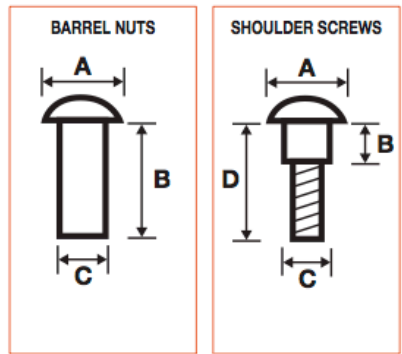
GAUGE	LENGTH						
	12mm	16mm	20mm	25mm	30mm	40mm	50mm
M4	●	●	●	●	●	●	
M5		●	●	●	●	●	
M6			●	●	●	●	●



CHROME PLATED ■ BARREL NUTS ■ SHOULDER SCREWS BOX QTY 100



GAUGE	LENGTH						
	1/2"	5/8"	3/4"	15/16"	1 1/16"	1 3/16"	1 9/16"
	13mm	16mm	19mm	24mm	27mm	30mm	33mm
	BARREL NUTS			SHOULDER SCREWS			
10 - 24 UNC	●	●	●	●	●	●	●
DIMENSION	(mm)						
A	10.9	10.9	10.9	10.9	10.9	10.9	10.9
B	12.6	15.9	6.8	11.7	12.1	12.1	13.2
C	6.3	6.3	6.3	6.3	6.3	6.3	6.3
D			18.7	23.4	26.1	30.0	33.0



CLUTCH HEAD REMOVABLE TOOL* SOLD SINGLY



DRIVER SIZE	SIZE			
	No. 6	No. 8	No. 10	No. 14
RT41	●			
RT51		●	●	
RT61				●

* Only suitable for use with A2 Stainless Steel Clutch Heads

DID YOU KNOW ...

- Clutch Heads can be manufactured in machine screws (subject to minimum order quantities)
- Clutch Head drive system was probably the world's first security fastener
- Clutch Heads are often used by the police for securing vehicle registration plates

**Sentinel®** DESIGN RIGHTS APPLY

The original Nettlefolds one-way pozidrive security system. This drive system only operates in a clockwise motion using a standard pozidrive tool. Anti-clockwise motion is prohibited due to the rounded shape of the drive recess. This recess is ideal for easy and fast application with power tools.

No specialist tools required, use standard pozi or Superdrive bits or drivers



Manufactured in bright zinc plated (CR-3) hardened steel woodscrews and machine screws.

**COUNTERSUNK ■ BRIGHT ZINC PLATED ■ TWINTHREAD WOODSCREWS****BOX QTY 200**

GAUGE	LENGTH	1/2"	3/4"	1"	1 1/4"	1 1/2"	2"	2 1/2"	3"	DRIVER SIZE
		13mm	19mm	25mm	32mm	38mm	50mm	63mm	75mm	
6	3.5mm		●	●						PZ2
8	4.2mm	●	●	●	●	●	●			PZ2
10	4.8mm			●	●	●	●	●		PZ2
12	5.5mm					●	●	●	●	PZ3

COUNTERSUNK ■ BRIGHT ZINC PLATED ■ METRIC MACHINE SCREWS**BOX QTY 100**

GAUGE	LENGTH	12mm	16mm	20mm	25mm	30mm	40mm	50mm	DRIVER SIZE
M4		●	●	●	●	●			PZ2
M5		●	●	●	●	●	●		PZ2
M6		●	●	●	●	●	●		PZ3

BUTTON HEAD ■ BRIGHT ZINC PLATED ■ METRIC MACHINE SCREWS**BOX QTY 100**

GAUGE	LENGTH	12mm	16mm	20mm	25mm	30mm	40mm	50mm	DRIVER SIZE
M4		●	●	●	●	●			PZ2
M5		●	●	●	●	●	●		PZ2
M6		●	●	●	●	●	●		PZ3
M8				●	●	●	●	●	PZ4

**SENTINEL® DIMENSIONS (mm)**

SCREW TYPE		TWINTHREAD WOODSCREWS				METRIC MACHINE SCREWS			
		No. 6	No. 8	No. 10	No. 12				
		3.5mm	4.2mm	4.8mm	5.5mm	M4	M5	M6	M8
DIMENSIONS		6.8	8.4	9.8	11.7	7.2	8.9	10.8	N/A
		2.5	2.8	3.5	4.2	2.7	3.0	3.6	N/A
BUTTON HEAD		N/A	N/A	N/A	N/A	7.7	9.8	11.6	15.8
		N/A	N/A	N/A	N/A	2.8	3.5	4.2	5.5

**DID YOU KNOW . . .**

- This is the most popular permanent security screw
- This pozidrive system is easier and more effective to use than the slotted Clutch Head drive system
- Mr B of Liverpool secured his second thatched roof bird box to his tree using Sentinel® Woodscrews as he had his first one stolen

SENTINEL® MADE TO MEASURE SPECIALS
(Subject to minimum order quantities)

- Can be manufactured from most materials
- Can be plated to your requirements
- Barrel Nuts
- Thread Forming Screws



Oval Pan Head

This security screw is extremely deceptive in its looks. It is not instantly apparent that this fastener is oval. At a casual glance this fastener looks like a stud or rivet, leaving the potential intruder fooled. Installation is only achieved by using the matching Oval socket and is suitable for low to medium torque applications. These screws are case hardened for further resistance to attack.

Requires matching driver

Can be manufactured as an AB Type self tapping screw or as a woodscrew subject to minimum order quantities.

Manufactured in bright zinc plated (CR-3) steel machine screws.

Oval Pan Head

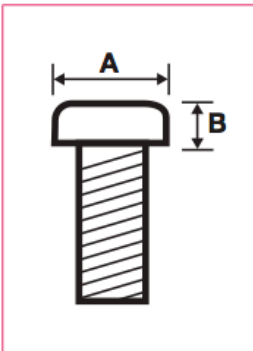
OVAL PAN HEAD ■ METRIC MACHINE SCREWS

BOX QTY 100

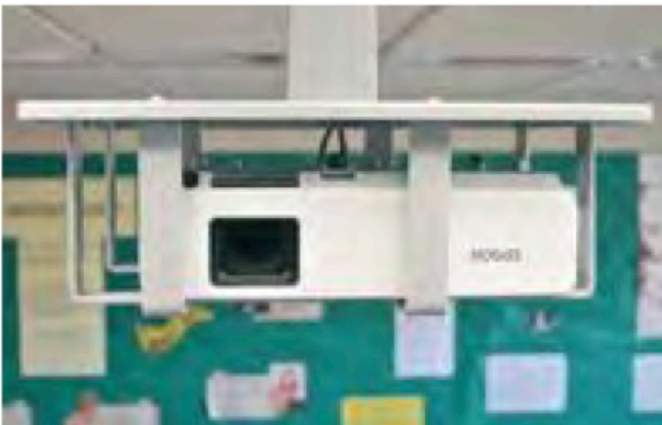


GAUGE \ LENGTH	LENGTH							DRIVER SIZE
	10mm	12mm	16mm	20mm	25mm	30mm	40mm	
M4	•	•	•	•	•	•	•	OP4
M5	•	•	•	•	•	•	•	OP56
M6	•	•	•	•	•	•	•	OP56
M8	TO ORDER ONLY (SUBJECT TO MINIMUM QTY)							

OVAL PAN HEAD DIMENSIONS (mm)



DIMENSIONS \ GAUGE	GAUGE		
	M4	M5	M6
A	6.8	9.9	9.9
B	2.8	3.5	3.5





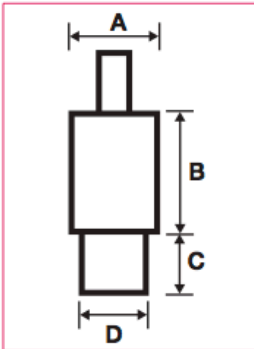
OVAL PAN HEAD DRIVER SIZE

SOLD IN SINGLES



DRIVER SIZE \ SCREW SIZE	M4	M5	M6
OP4	●		
OP56		●	●

OVAL PAN HEAD DRIVER DIMENSIONS (mm)



DRIVER SIZE \ DIMENSION	A	B	C	D
OP4	17.4	13.0	14.1	15.9
OP56	17.4	13.0	14.1	15.9

IDEAL FOR . . .

- Display Cabinets
- Playground Equipment
- Electrical Goods
- Signage
- Audio Visual Equipment

Used on cable TV trunking in a block of flats which stopped previous tenants connecting wires inside to get free subscription!

HOW TO INSTALL

Fool the potential intruder with this stud and rivet lookalike . . .

. . . don't even let them think about tampering!



**TORXPlus® PATENTED PRODUCT**

The original Resistor® screw has six lobes. Its successor, the Torxplus® has five lobes. This provides a higher level of security due to the fact that the design is patented. Tooling availability is restricted and driver sales are therefore limited to bonafide Torxplus® customers. All Torxplus® drivers are logged for customer security. The drive quality of the elliptical five lobe system makes this fastener suitable for higher torque applications.

Requires matching tooling - Registered for controlled availability



INSERT BIT

All sizes shown to order only (7-14 days delivery).

Manufactured in A2 stainless steel.

**COUNTERSUNK ■ AB TYPE SELF TAPPING SCREWS****BOX QTY 100**

GAUGE	LENGTH	3/8"	1/2"	5/8"	3/4"	1"	1 1/4"	1 1/2"	2"	2 1/2"	3"	DRIVER SIZE
		9.5mm	13mm	16mm	19mm	25mm	32mm	38mm	50mm	63mm	75mm	
6	3.5mm		●		●	●		●				15IPR
8	4.2mm		●		●	●	●	●				20IPR
10	4.8mm		●		●	●	●	●				25IPR
12	5.5mm			●		●	●	●				25IPR
14	6.3mm			●	●	●	●	●				30IPR

■ All sizes shown to order only (7-14 days delivery).

BUTTON HEAD ■ AB TYPE SELF TAPPING SCREWS**BOX QTY 100**

GAUGE	LENGTH	3/8"	1/2"	5/8"	3/4"	1"	1 1/4"	1 1/2"	2"	2 1/2"	3"	DRIVER SIZE
		9.5mm	13mm	16mm	19mm	25mm	32mm	38mm	50mm	63mm	75mm	
6	3.5mm		●		●	●		●				10IPR
8	4.2mm		●		●	●	●	●				15IPR
10	4.8mm		●		●	●	●	●				25IPR
14	6.3mm		●		●	●	●	●				27IPR

■ All sizes shown to order only (7-14 days delivery).

**TORXPLUS® MADE TO MEASURE SPECIALS
(Subject to minimum order quantities)**

- Imperial Machine Screws
- Metric Machine Screws
- Special Threads/Materials/Finishes





Tri-Head

Tri-Head screws are a widely used vandal deterrent fixing. They are quickly and easily installed and removed using a matching driver. The tall head design makes this screw a common choice for applications in a recess or channel.

Requires matching driver



KEY WRENCH

Manufactured in A2 stainless steel.

Tri-Head

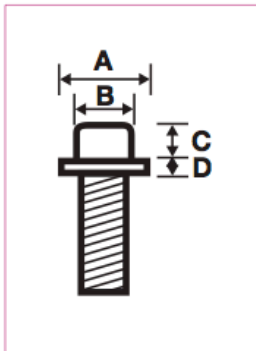
TRI-HEAD ■ METRIC MACHINE SCREWS BOX QTY 100



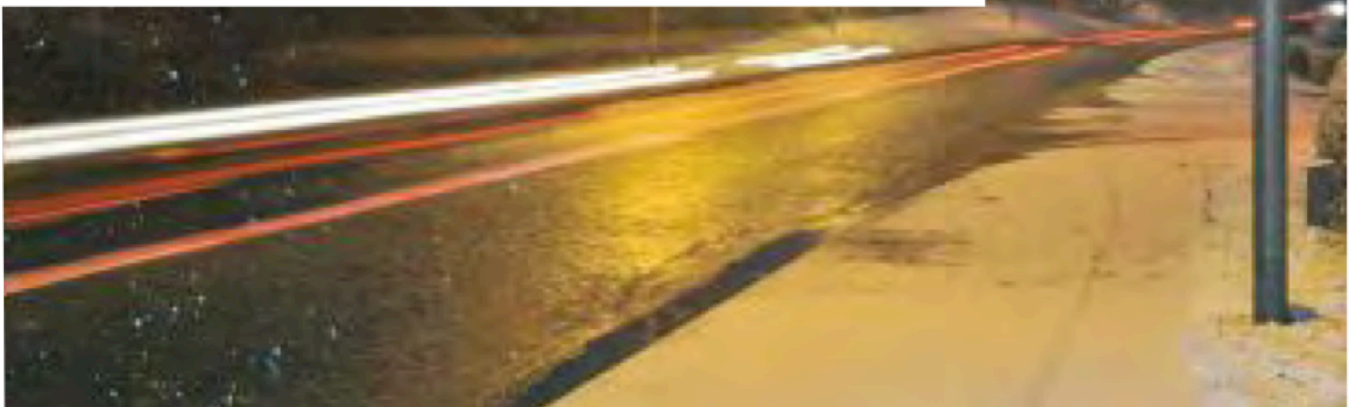
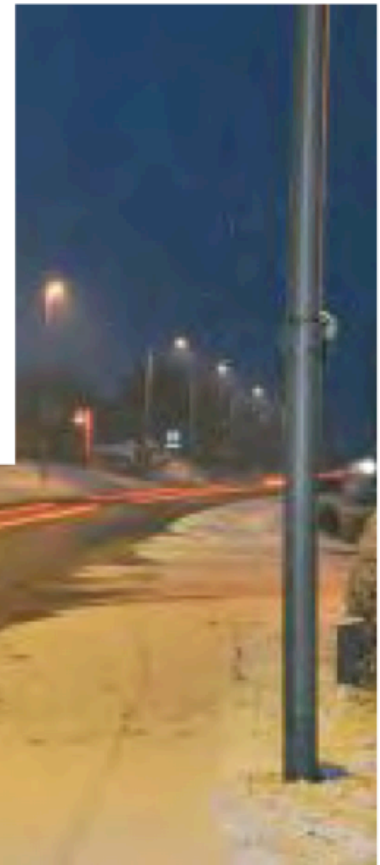
LENGTH \ GAUGE	20mm	30mm	40mm	50mm	DRIVER SIZE
M8	●	●	●	●	TRI-8



TRI-HEAD DIMENSIONS (mm)



DIMENSION \ LENGTH	A	B	C	D
20mm	13.7	8.5	6.5	1.5
30mm	13.7	8.5	6.5	1.5
40mm	13.7	8.5	6.5	1.5
50mm	17.0	8.5	6.0	2.0





SOLOK™ SCREWS

Solok™ PATENTED PRODUCT

The Solok™ system is a unique drive system where every design is exclusive to the customer or user. As there are millions of driver socket variations, your driver key will be specific to you, therefore enhancing the level of security to a new plane. Every new customer gets a Solok™ code to which their screws and tools are made, meaning even someone else's Solok™ tools will not fit screws made to your code.

It requires a perfectly cut key to operate the screw.
(Only the owners have the private exclusive key code).



INSERT BIT

Manufactured to order in steel or stainless steel, subject to minimum order quantities (as shown below).
Initial one-off unique tooling set-up charge applicable.



COUNTERSUNK ■ AB TYPE SELF TAPPING SCREWS



GAUGE	LENGTH	3/8"	1/2"	5/8"	3/4"	1"	1 1/4"	1 1/2"	2"	DRIVER SIZE	MIN ORDER QTY PER SIZE
		9.5mm	13mm	16mm	19mm	25mm	32mm	38mm	50mm		
4	2.9mm	●	●	●	●	●				SL04	2,500
6	3.5mm	●	●	●	●	●	●	●	●	SL10	2,500
8	4.2mm	●	●	●	●	●	●	●	●	SL10	2,500
10	4.8mm	●	●	●	●	●	●	●	●	SL10	2,500
12	5.5mm	●	●	●	●	●	●	●	●	SL25	2,500
14	6.3mm	●	●	●	●	●	●	●	●	SL25	2,500

BUTTON HEAD ■ AB TYPE SELF TAPPING SCREWS



GAUGE	LENGTH	3/8"	1/2"	5/8"	3/4"	1"	1 1/4"	1 1/2"	2"	DRIVER SIZE	MIN ORDER QTY PER SIZE
		9.5mm	13mm	16mm	19mm	25mm	32mm	38mm	50mm		
4	2.9mm	●	●	●	●	●				SL04	2,500
6	3.5mm	●	●	●	●	●	●	●	●	SL10	2,500
8	4.2mm	●	●	●	●	●	●	●	●	SL10	2,500
10	4.8mm	●	●	●	●	●	●	●	●	SL10	2,500
12	5.5mm	●	●	●	●	●	●	●	●	SL25	2,500
14	6.3mm	●	●	●	●	●	●	●	●	SL25	2,500

COUNTERSUNK ■ METRIC MACHINE SCREWS BOX QTY 100



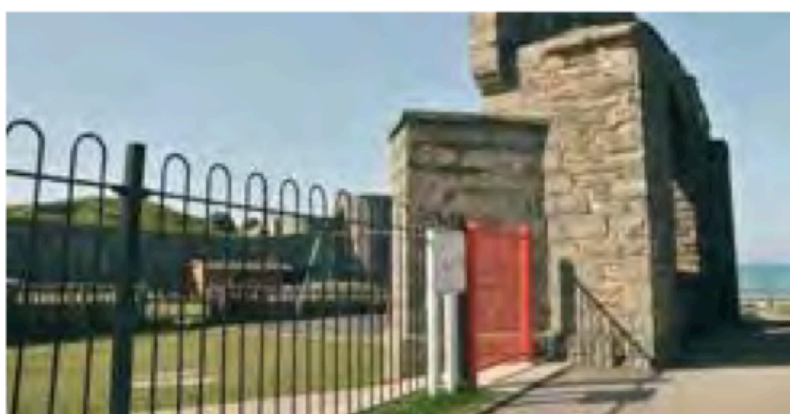
GAUGE	LENGTH	6mm	8mm	10mm	12mm	16mm	20mm	25mm	30mm	40mm	50mm	60mm	80mm	100mm	DRIVER SIZE	MIN ORDER QTY PER SIZE
		M3	●	●	●	●	●	●	●	●						
M4		●	●	●	●	●	●	●	●	●	●				SL10	2,500
M5			●	●	●	●	●	●	●	●	●				SL10	2,500
M6			●	●	●	●	●	●	●	●	●	●			SL25	2,500
M8					●	●	●	●	●	●	●	●	●	●	SL31	2,000
M10							●	●	●	●	●	●	●	●	SL31	1,500
M12								●	●	●	●	●	●	●	SL50	1,000
M16									●	●	●	●	●	●	SL50	POA



BUTTON HEAD ■ METRIC MACHINE SCREWS



GAUGE	LENGTH													DRIVER SIZE	MIN ORDER QTY PER SIZE	
	6mm	8mm	10mm	12mm	16mm	20mm	25mm	30mm	40mm	50mm	60mm	80mm	100mm			
M3	●	●	●	●	●	●	●								SL04	2,500
M4		●	●	●	●	●	●	●	●	●					SL10	2,500
M5		●	●	●	●	●	●	●	●	●					SL10	2,500
M6		●	●	●	●	●	●	●	●	●	●				SL25	2,500
M8					●	●	●	●	●	●	●	●	●		SL31	2,000
M10						●	●	●	●	●	●	●	●		SL31	1,500
M12							●	●	●	●	●	●	●		SL50	1,000
M16									●	●	●	●	●		SL50	POA



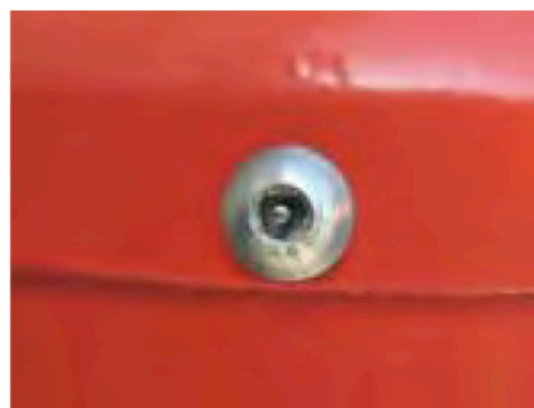
IDEAL FOR . . .

High security areas such as:

- Works of Art
- Sculptures
- Cell Security
- Cash Registers/Machines
- Patent Protection
- Fire Department
- Pleasure Boats
- Radio Masts

SOLOK™ MADE TO MEASURE SPECIALS
(Subject to minimum order quantities)

- A4 Stainless Steel
- High Tensile Carbon Steel
- Imperial Machine Screws
- Type A, B and F Self Tapping Screws



Sole drive Sole key **Solok™**



NOGO™ ENCLOSURES

Nogo™ PATENTS AND DESIGN REGISTRATIONS APPLY

The Nogo enclosure offers the highest security for any nut or bolt. This two part enclosure is made from case hardened steel and resists most forms of attack, including drills and saws.

No specialist tools required, use standard hammer



Home Office approved.
Manufactured in zinc plated hardened steel (CR-3).



TYPE 1 SOLD IN SINGLES - INC. CAP AND BASE



SIZE	M5	M6	M8	M10	M12
STOCK	●	●	●	●	●



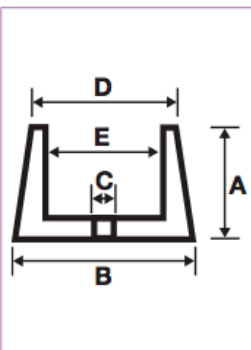
The only security fastener to win
Sold Secure Silver Award

TYPE 2 SOLD IN SINGLES - INC. CAP AND BASE



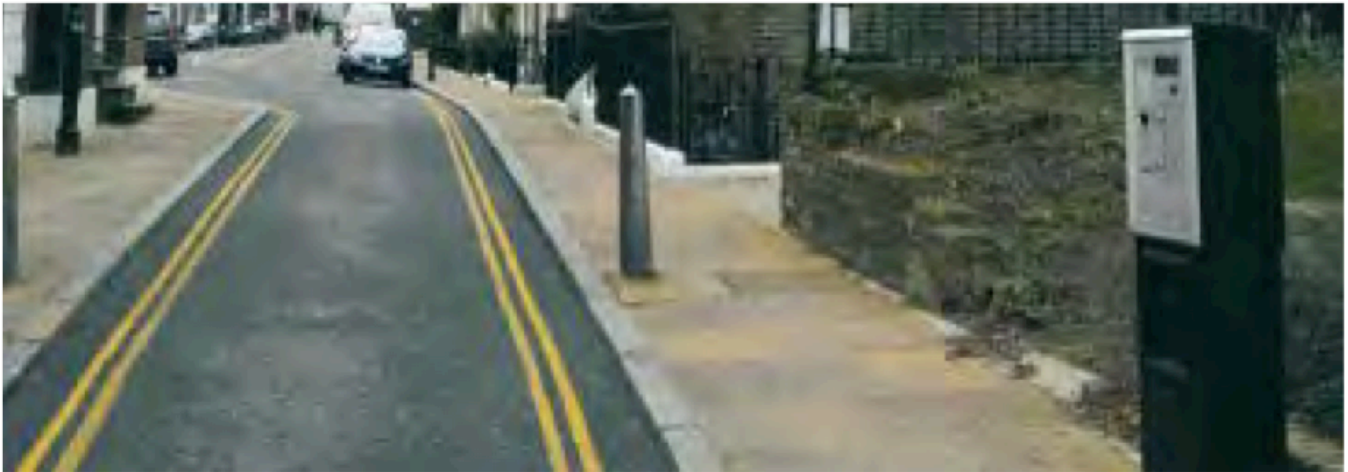
SIZE	M5	M6	M8	M10	M12
STOCK	●	●	●	●	●

NOGO™ TECHNICAL INFO (mm)



SIZE	LENGTH	MEASUREMENTS (mm)				
		A	B	C	D	E
M5		12.0	20.0	5.4	18.0	12.9
M6		13.0	22.0	6.4	20.0	15.0
M8		14.0	28.4	8.4	26.0	20.0
M10		18.0	31.8	10.4	30.0	25.3
M12		20.0	35.8	12.4	32.0	26.5





A. FIX BASE CUP UNDER FASTENER

B. HAMMER HOME CAP FOR THE MOST SECURE FASTENING

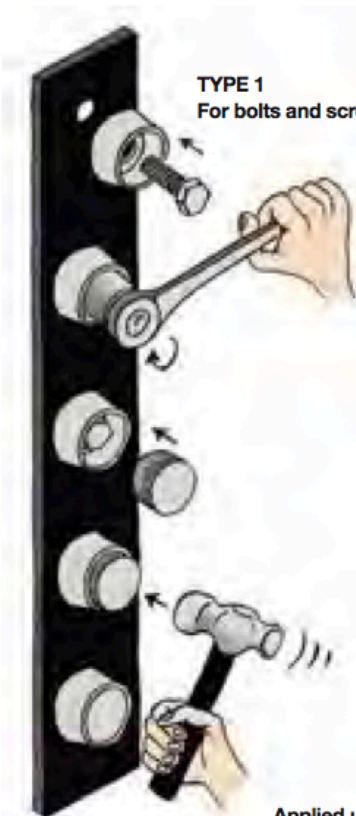


TYPE 1

TYPE 2

TYPE 1

TYPE 2



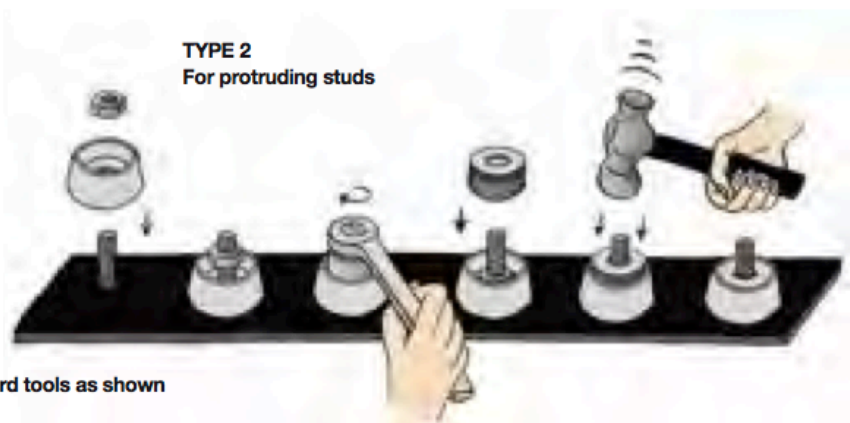
TYPE 1
For bolts and screws



IDEAL FOR ...

- Window Grilles and Shutters
- Gates and Barriers
- Parking Meters
- Heavy Duty Applications
- Other High Security Applications

Used on boiler housings in new build houses which stopped the expensive problem of theft!



TYPE 2
For protruding studs

Applied using standard tools as shown



Kinmar® Permanent PATENTED PRODUCT

Unique high torque security drive. This patented system is a superior alternative to the Shear Nut, having the advantage of not leaving any unplated surfaces and not being governed by the shear point, enabling an accurate and reliable torque rating to be achieved. This fastener can be re-torqued if required.

This is a permanent fixing. (Removable version - see page 25/26)

Requires matching driver socket

Manufactured in case hardened bright zinc plated steel (CR-3) and galvanised finish. Also manufactured in A2 stainless steel.



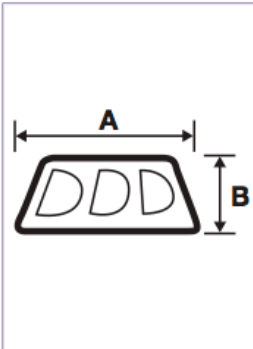
KINMAR® PERMANENT NUTS

BOX QTY 100



	SIZE				
MATERIAL	M5	M6	M8	M10	M12
BZP STEEL	●	●	●	●	●
GALVANISED		●	●	●	●
A2 STAINLESS	●	●	●	●	●
DRIVER SIZE	KM6P	KM6P	KM8P	KM10P	KM12P

KINMAR® PERMANENT DIMENSIONS (mm)



	SIZE				
DIMENSIONS	M5	M6	M8	M10	M12
A	12.1	12.1	16.1	20.1	24.2
B	5.6	5.6	7.3	9.2	10.6

KINMAR® PERMANENT BOLTS

BOX QTY 100



- Stocked in M8 x 40mm in Plated Steel.
- Kinmar® Permanent Bolts manufactured to order.
- Kinmar® Permanent Bolt heads have the same dimensions as the Kinmar® nuts.
- Available in most common sizes and materials subject to minimum order quantity.
- Please contact us with the quantity, size and material you require.





KINMAR® DRIVER SOCKET SOLD IN SINGLES

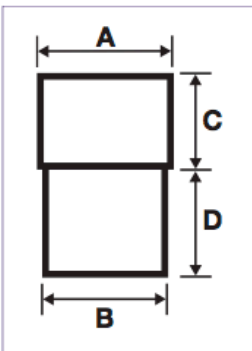


DRIVER SIZE	TO SUIT				
	M5	M6	M8	M10	M12
KM6P	•	•			
KM8P			•		
KM10P				•	
KM12P					•

▪ 1/2" Square drive socket



KINMAR® DRIVER SOCKET DIMENSIONS (mm)



DRIVER SIZE	DIMENSIONS			
	A	B	C	D
KM6P	25.1	15.8	19.9	16.0
KM8P	25.1	20.1	16.1	19.9
KM10P	30.0	26.2	17.2	24.8
KM12P	30.0	30.0	42.0 - overall length	

DID YOU KNOW ...

- The Kinmar® Permanent Nut is one of the most versatile one-way security nuts on the market
- The Kinmar® Permanent Nut is a superior product to the Shear Nut
- The Kinmar® driver sockets are robust heavy duty tools ensuring consistent results

HOW TO INSTALL





Kinmar® Removable PATENTED PRODUCT

Another unique high torque security drive system which can only be undone with the unique matching socket. This product is extra resilient to attack because of its rounded shape and case hardened steel construction. Probably the most cost-effective removable security nut on the market.

Requires matching driver socket

Manufactured in case hardened bright zinc plated steel (CR-3) and galvanised finish. Also manufactured in A2 stainless steel.



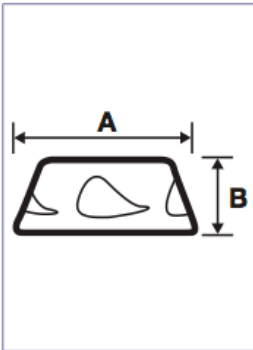
KINMAR® REMOVABLE NUTS

BOX QTY 100



SIZE	M5	M6	M8	M10	M12
MATERIAL					
BZP STEEL	•	•	•	•	•
GALVANISED		•	•	•	•
A2 STAINLESS	•	•	•	•	•
DRIVER SIZE	KM6R	KM6R	KM8R	KM10R	KM12R

KINMAR® REMOVABLE DIMENSIONS (mm)



SIZE	M5	M6	M8	M10	M12
DIMENSIONS					
A	12.1	12.1	16.1	20.1	24.2
B	5.8	5.8	7.3	9.2	10.6

KINMAR® REMOVABLE BOLTS



- Kinmar® Removable Bolts manufactured to order.
- Kinmar® Removable Bolt heads have the same dimensions as the Kinmar® nuts.
- Available in most common sizes and materials subject to minimum order quantity.
- Please contact us with the quantity, size and material you require.



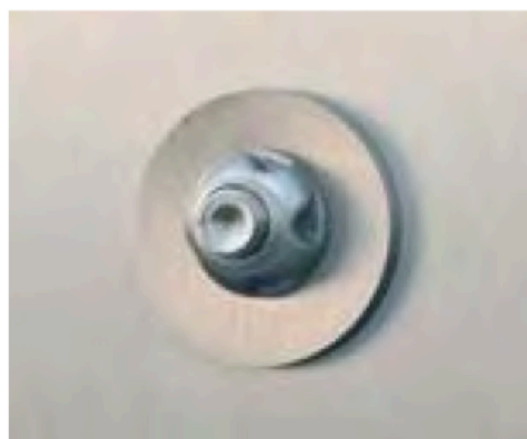


KINMAR® DRIVER SOCKET SOLD IN SINGLES

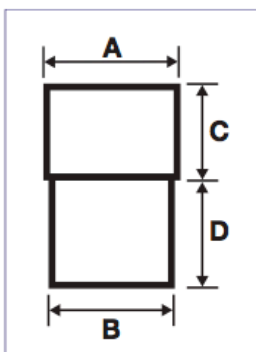


DRIVER SIZE	TO SUIT				
	M5	M6	M8	M10	M12
KM6R	•	•			
KM8R			•		
KM10R				•	
KM12R					•

■ 1/2" Square drive socket



KINMAR® DRIVER SOCKET DIMENSIONS (mm)



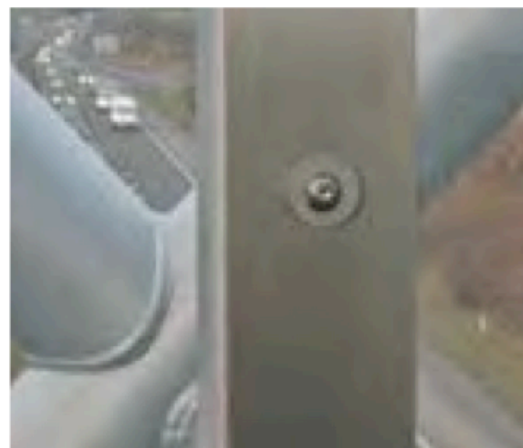
DRIVER SIZE	DIMENSIONS			
	A	B	C	D
KM6R	25.1	15.8	19.9	16.0
KM8R	25.1	20.1	16.1	19.9
KM10R	30.0	26.2	17.2	24.8
KM12R	30.0	30.0	42.0 - overall length	

DID YOU KNOW . . .

■ The Hafren logo is derived from the unique shaped segments of the Kinmar® Removable Nut



HOW TO INSTALL



Armour Ring™ PATENTED PRODUCT

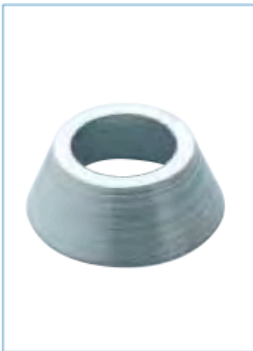
A simple conical collar which is hammered over any standard hexagon bolt head or nut, rendering it tamper resistant. This security fastener has the advantage of not being governed by torque and can be applied to existing fasteners. Another advantage of using the Armour Ring™ is that it leaves a smooth cover to existing fixings. Armour Rings™ are suitable for any British standard or DIN standard hexagon bolts and nuts, including hex head coach screws.

Use Armour Ring™ tool for fast and easy application

Home Office approved.
Manufactured in bright zinc plated (CR-3) steel and A2 stainless steel.



ARMOUR RING™ ■ BRIGHT ZINC PLATED BOX QTY 100



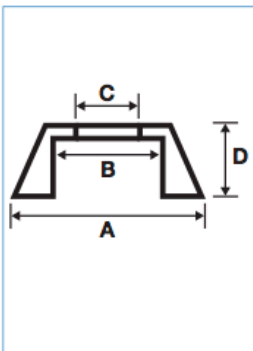
SIZE	M6	M8	M10	M12	M16	M20
STOCK	●	●	●	●	●	

ARMOUR RING™ ■ A2 STAINLESS STEEL BOX QTY 100

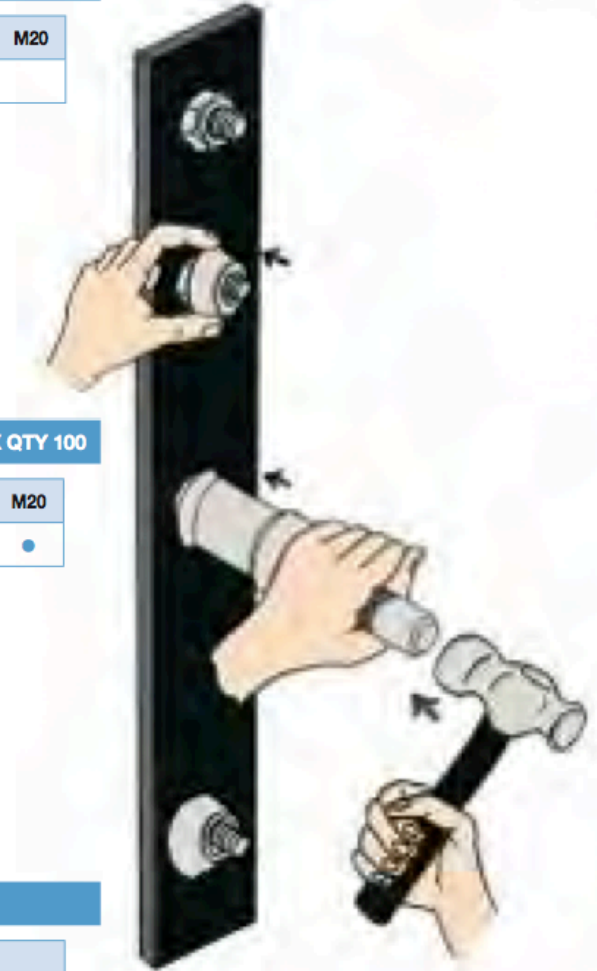


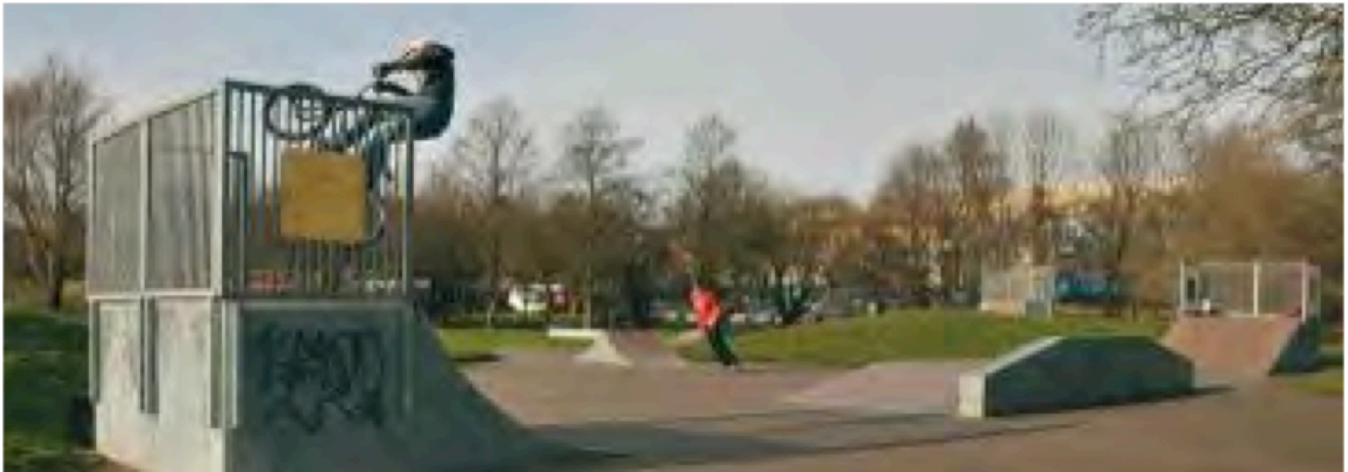
SIZE	M6	M8	M10	M12	M16	M20
STOCK	●	●	●	●	●	●

ARMOUR RING™ DIMENSIONS (mm)



DIMENSIONS \ SIZE	M6	M8	M10	M12	M16	M20
A	15.8	20.0	26.6	33.0	41.2	51.0
B	10.9	14.2	18.6	20.8	26.7	33.5
C	7.2	10.5	12.0	13.5	17.3	19.0
D	6.8	7.7	9.8	12.3	16.0	19.0





ARMOUR RING™ TOOL SOLD IN SINGLES

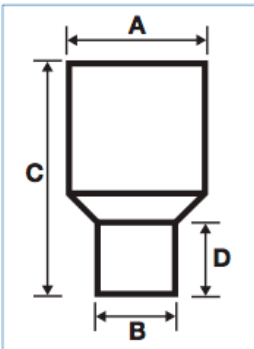


TOOL HEADS	TO SUIT				
	M6	M8	M10	M12	M16
ART-H6	•				
ART-H8		•			
ART-H10			•		
ART-H12				•	
ART-H16					•
HANDLE	LENGTH 148mm				



All tool heads are interchangeable with universal handle

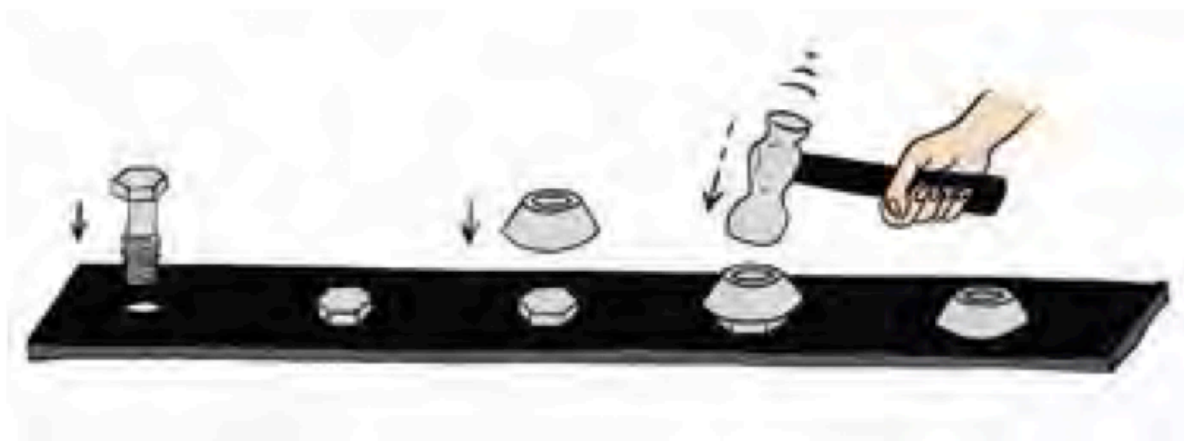
ARMOUR RING™ TOOL DIMENSIONS (mm)



TOOL HEADS	DIMENSIONS			
	A	B	C	D
ART-H6	31.7	16.2	47.9	11.0
ART-H8	31.7	19.9	53.9	18.7
ART-H10	31.7	24.7	60.4	27.0
ART-H12	31.7	31.7	61.8	N/A
ART-H16	35.0	N/A	59.5	N/A

DID YOU KNOW . . .

- Armour Ring™ is the most cost effective way of securing an existing fastener
- Armour Ring™ is specified by Health and Safety Executives because it leaves a smooth finish and covers any sharp edges on a bolt head





SHEAR NUTS & SADDLE BOLTS

Shear Nuts

A high security permanent nut fastening. The hexagonal part of the nut shears off at a predetermined torque (because only the cone part is threaded) leaving a tamper resistant cone.

No specialist tools required, use standard socket or spanner

Manufactured in bright zinc plated (CR-3) steel, galvanised steel and A2 stainless steel.

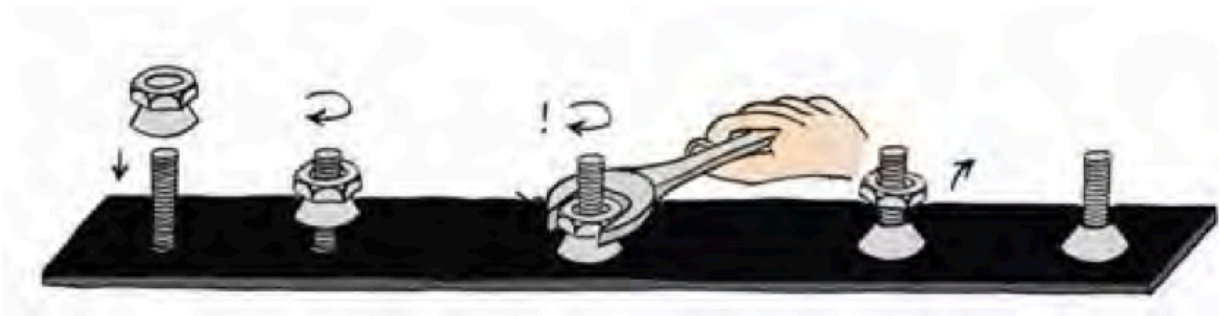
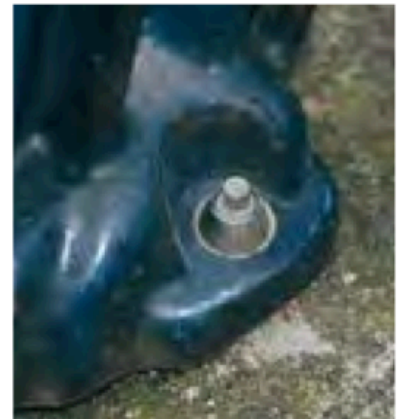
Shear Nuts



BRIGHT ZINC PLATED		BOX QTY 100						
SIZE		M6	M8	M10	M12	M16	M20	M24
STOCK		●	●	●	●	●	●	
SHEAR TORQUE	lb/ft	5-9	10-15	23-28	38-44	54-60	72-82	TO ORDER
	nm	7-14	14-20	31-38	52-60	74-82	100-113	



A2 STAINLESS STEEL		BOX QTY 100						
SIZE		M6	M8	M10	M12	M16	M20	M24
STOCK		●	●	●	●	●	●	
SHEAR TORQUE	lb/ft	5-9	10-15	23-28	38-44	54-60	72-82	TO ORDER
	nm	7-14	14-20	31-38	52-60	74-82	100-113	





GALVANISED **BOX QTY 100**

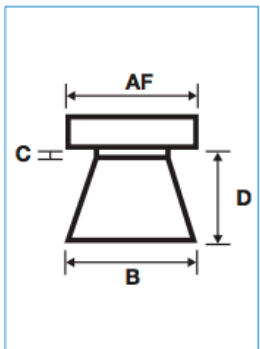


SIZE		M8	M10	M12	M16	M20	M24
STOCK		●	●	●	●	●	
SHEAR TORQUE	lb/ft	10-15	23-28	38-44	54-60	72-82	TO ORDER
	nm	14-20	31-38	52-60	74-82	100-113	

DID YOU KNOW . . .

- "A leading supermarket chain was having problems with skateboarders stealing the shopping trolley wheel bearings. Being top quality bearings that fit most skateboard wheels these proved rather popular with the youths in town. 4 Shear Nuts later - no further thefts."

SHEAR NUT DIMENSIONS (mm)



SIZE	FINISH	BRIGHT ZINC PLATED				A2 STAINLESS STEEL				GALVANISED			
		AF	B	C	D	AF	B	C	D	AF	B	C	D
M6		14.0	13.9	0.5	7.2	10.0	10.0	N/A	6.0	N/A	N/A	N/A	N/A
M8		16.0	15.8	0.5	7.6	13.0	13.0	N/A	7.0	17.0	16.8	N/A	7.2
M10		19.0	18.9	1.0	8.8	17.0	17.0	N/A	9.0	19.0	18.9	N/A	9.2
M12		22.0	21.9	1.0	9.9	19.0	19.0	N/A	10.0	22.0	21.9	N/A	9.2
M16		24.0	23.8	1.5	11.5	24.0	24.0	N/A	14.0	24.0	23.8	N/A	11.5
M20		32.0	31.8	2.8	19.0	30.0	30.0	N/A	18.0	32.0	31.8	2.9	18.8

GALVANISED SADDLE BOLTS **BOX QTY 100**



- Stocked in M8 x 40mm Galvanised.
- Suitable for most types of pallisade fencing.
- Commonly used with galvanised shear nuts (above) or galvanised Kinmar® Permanent Nuts (see page 24).





SHEAR BOLTS

Shear Bolts

A high security permanent bolt fastening. This bolt works on the same concept as a Shear Nut. The hexagon part of the bolt shears off leaving a plain tamper resistant head.

No specialist tools required, use standard socket or spanner

Manufactured in bright zinc plated (CR-3) steel, galvanised steel and A2 stainless steel.

Shear Bolts

BUTTON HEAD

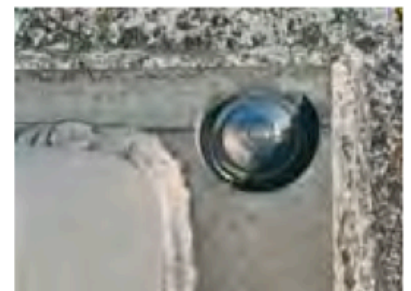
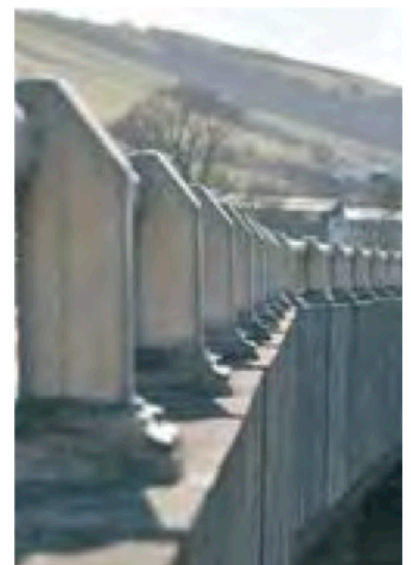


- Shear Bolts made to order only.
- Delivery 2-3 weeks approximate.
- Most common materials and plating available.
- Please phone with material, size and quantity required.

COUNTERSUNK HEAD



- Shear Bolts made to order only.
- Delivery 2-3 weeks approximate.
- Most common materials and plating available.
- Please phone with material, size and quantity required.





Tufnuts® PATENTED PRODUCT

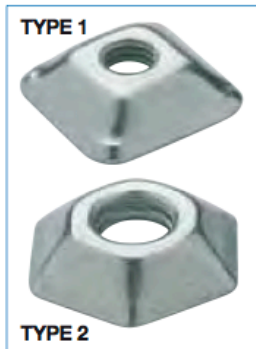
The Tufnut® security nut is a unique removable nut. It is easily installed using regular tools as shown in the diagram at the bottom of this page. Due to the angled shape of this nut it is extremely difficult to get a grip of this nut to be able to remove it. It is also hardened to make it more resilient to attack. You need 2 Tufnuts® to install and to remove. Insert an adjustable spanner or vice grips between the 2 Tufnuts® and then turn both nuts to secure, finally removing the second Tufnut® leaving the first one tightly secured and tamper resistant.

Use standard spanner

Manufactured in bright zinc plated (CR-3) steel.



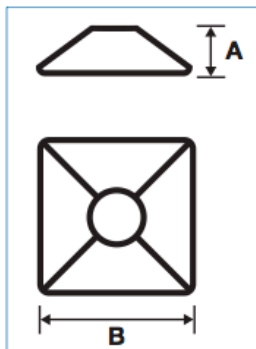
TUFNUTS® ■ TYPE 1 & TYPE 2 BOX QTY 100



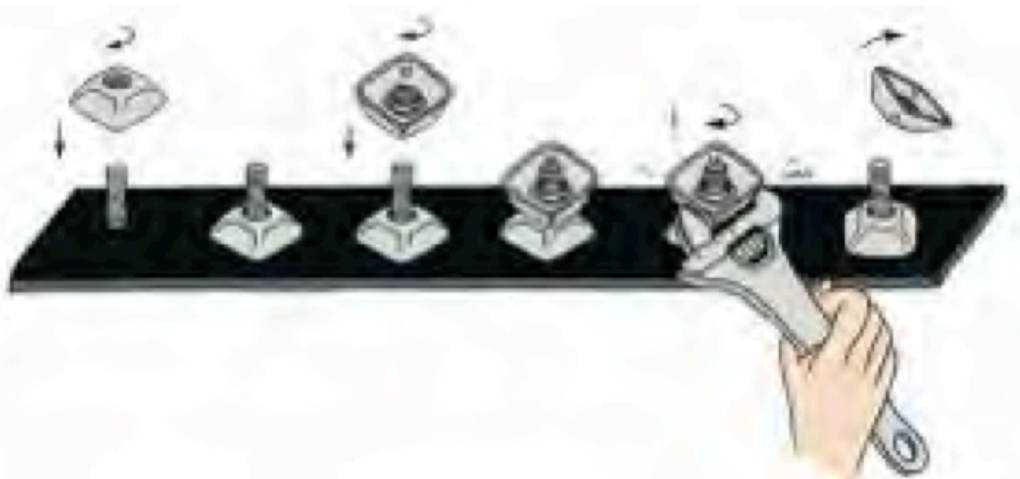
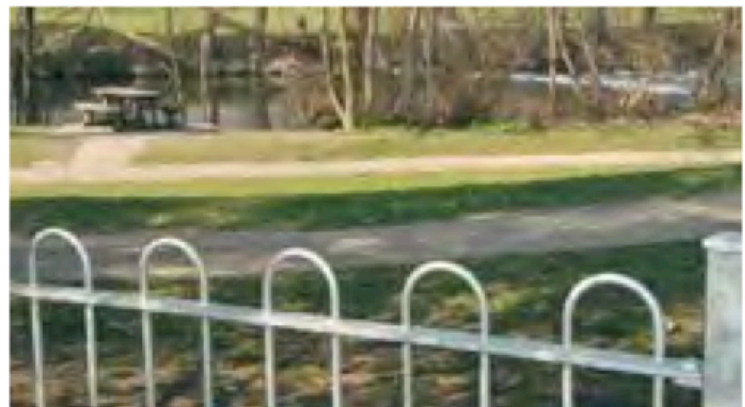
STYLE \ SIZE	M6	M8	M10	M12
TYPE 1	•	•	•	
TYPE 2				•



TUFNUTS® DIMENSIONS



SIZE \ DIMENSIONS	A	B
TYPE 1 M6	7.4	26.0
TYPE 1 M8	7.4	26.0
TYPE 1 M10	7.4	26.0
TYPE 2 M12	7.7	31.0





SCROLL™ NUT SYSTEM

Scroll™ Nut PATENTED PRODUCT

This high security nut is virtually impossible to remove without the unique matching driver. Due to its rounded design, there are no sharp angles to provide grip for normal hand tools. Suitable for medium to high torque applications.

Requires special matching driver socket.

Manufactured in A2 stainless steel.



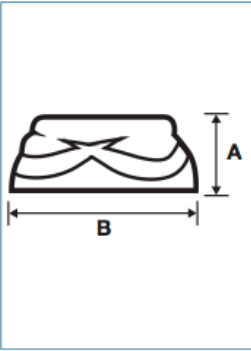
A2 STAINLESS STEEL BOX QTY 50



SIZE	M3	M4	M5	M6	M8	M10	M12	M16	M20	M24
STOCK	●	●	●	●	●	●	●	●	●	●

- Other materials and finishes available to order

SCROLL™ NUT DIMENSIONS (mm)



SIZE	M3	M4	M5	M6	M8	M10	M12	M16	M20	M24
A	3.2	3.2	4.2	5.5	6.4	7.2	8.7	11.0	12.8	14.2
B	7.9	7.9	9.5	12.7	15.8	19.0	22.2	28.5	34.9	38.0

SCROLL™ BOLTS



- Scroll™ Bolts manufactured to order.
- Scroll™ Bolt heads have the same dimensions as the Scroll™ Nuts.
- Please contact us with the quantity, size and material you require.



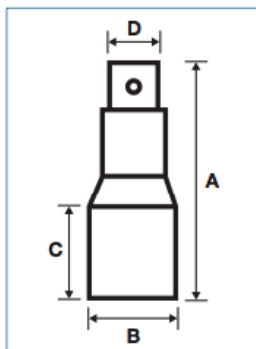


SCROLL™ DRIVER TOOL **SOLD IN SINGLES**



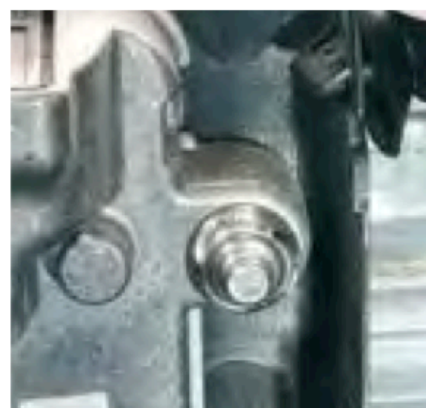
DRIVER SIZE TO SUIT	SC34	SC5	SC6	SC8	SC10	SC12	SC16	SC20	SC24
M3	•								
M4	•								
M5		•							
M6			•						
M8				•					
M10					•				
M12						•			
M16							•		
M20								•	
M24									•

SCROLL™ DRIVER TOOL DIMENSIONS (mm)



DRIVER SIZE DIMENSIONS	SC34	SC5	SC6	SC8	SC10	SC12	SC16	SC20	SC24
A	29.5	40.3	62.5	62.8	64.2	65.2	53.8	70.1	118.3
B	10.5	12.5	16.9	19.9	24.9	28.5	34.8	44.5	44.5
C	11.7	15.1	22.7	21.7	24.4	27.3	16.1	22.3	45.3
D	11.0	13.0	10.0	10.0	13.0	13.0	14.0	19.0	16.0

- IDEAL FOR...**
- Sanitary Ware in Public Areas
 - Safety Guards on Machinery
 - Automotive Components
 - Shipbuilders
 - Public Transport





4-HOLE NUT SYSTEM

4-Hole Nut PATENT APPLIED FOR

This security nut is for low torque applications and is manufactured with a narrow circular groove above the small locating holes, rendering this nut tamper resistant. This aesthetically pleasing head design is often specified purely for its good looks, particularly on glass panels and stainless steel architecture.

Requires special matching driver socket.

Manufactured in A2 stainless steel.



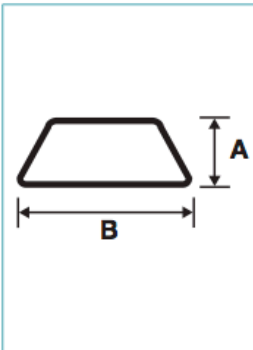
A2 STAINLESS STEEL BOX QTY 50



SIZE	M6	M8	M10	M12	M16	M20
STOCK	●	●	●	●	●	●

- Other materials and finishes available to order

4-HOLE NUT DIMENSIONS (mm)



SIZE	DIMENSIONS	
	A	B
M6	6.5	19.0
M8	6.5	19.0
M10	6.5	19.0
M12	7.0	25.0
M16	10.0	38.0
M20	10.0	38.0

4-HOLE SECURITY BOLTS



- 4-Hole security bolts manufactured to order.
- 4-Hole security bolt heads have the same dimensions as 4-Hole nuts.
- Please contact us with the quantity, size and material you require.



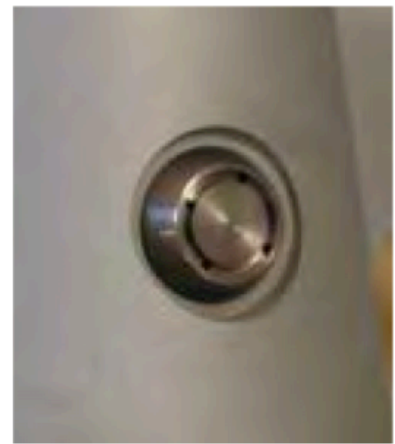


4-HOLE DRIVER TOOL

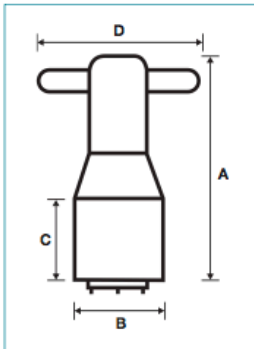
SOLD IN SINGLES



DRIVER SIZE	TO SUIT					
	M6	M6	M10	M12	M16	M20
FH1	●	●	●			
FH2				●		
FH3					●	●



4-HOLE DRIVER TOOL DIMENSIONS (mm)



DRIVER SIZE	DIMENSIONS			
	A	B	C	D
FH1	61.0	19.0	19.0	52.0
FH2	65.0	25.0	22.0	52.0
FH3	80.0	32.0	29.0	52.0

IDEAL FOR . . .

Aesthetically pleasing applications such as:

- Glass Balustrades
- Display Cabinets
- Bespoke Shopfittings
- Architecture
- Ironmongery
- Sculptures

4-HOLE MADE TO MEASURE SPECIALS (Subject to minimum order quantities)



- Can be manufactured from most common materials.
- Can be plated to your requirements.
- Male & Female Bolts.
- Barrel Nuts.



SLEEVE ANCHORS



Sleeve Anchors

This sleeve anchor is a through fixing, thus ensuring fast and simple installation. Ideal for many security applications in a wide variety of base materials. The unique Kinmar® drive offers an accurate torque controlled security fixing which can be re-torqued if necessary. There is a permanent and removable version available. The 6-Lobe Pin anchors in A2 stainless steel are available in Button Head and Countersunk offering a removable high torque anchor fixing.

Requires matching tooling



KINMAR® PERMANENT/REMOVABLE DRIVER SOCKETS



6-LOBE PIN INSERT BIT

Manufactured in bright zinc plated (CR-3) steel and A2 stainless steel.

ANCHORS



BRIGHT ZINC PLATED ■ KINMAR® PERMANENT

BOX QTY 50



TECHNICAL SIZE	DRILL HOLE DIAMETER (mm)	MAXIMUM FIXTURE THICKNESS (mm)	MINIMUM HOLE DEPTH* (mm)	RECOMMENDED TIGHTENING TORQUE (nm)	SAFE STATIC LOADS FOR 5.8 THREADED STUD (kn)		DRIVER SIZE
					TENSION	SHEAR	
M6 x 45mm	8	6	37	7	1.1	2.0	KM6P
M8 x 50mm	10	6	45	15	1.9	6.5	KM8P
M8 x 60mm	10	16	45	15	1.9	6.5	KM8P
M8 x 70mm	10	25	45	15	1.9	6.5	KM8P
M8 x 90mm	10	45	45	15	1.9	6.5	KM8P
M10 x 60mm	12	8	52	31	3.0	8.5	KM10P
M10 x 70mm	12	18	52	31	3.0	8.5	KM10P
M10 x 80mm	12	25	52	31	3.0	8.5	KM10P
M10 x 95mm	12	45	52	31	3.0	8.5	KM10P



BRIGHT ZINC PLATED ■ KINMAR® REMOVABLE

BOX QTY 50



TECHNICAL SIZE	DRILL HOLE DIAMETER (mm)	MAXIMUM FIXTURE THICKNESS (mm)	MINIMUM HOLE DEPTH* (mm)	RECOMMENDED TIGHTENING TORQUE (nm)	SAFE STATIC LOADS FOR 5.8 THREADED STUD (kn)		DRIVER SIZE
					TENSION	SHEAR	
M6 x 45mm	8	6	37	7	1.1	2.0	KM6R
M8 x 50mm	10	6	45	15	1.9	6.5	KM8R
M8 x 60mm	10	16	45	15	1.9	6.5	KM8R
M8 x 70mm	10	25	45	15	1.9	6.5	KM8R
M8 x 90mm	10	45	45	15	1.9	6.5	KM8R
M10 x 60mm	12	8	52	31	3.0	8.5	KM10R
M10 x 70mm	12	18	52	31	3.0	8.5	KM10R
M10 x 80mm	12	25	52	31	3.0	8.5	KM10R
M10 x 95mm	12	45	52	31	3.0	8.5	KM10R

* Minimum hole depth is for maximum fixture thickness. For thinner fixtures increase the hole depth accordingly.



“Heavy duty security fixing - saving you time and money”

IDEAL FOR . . .

Saving valuable time and money when fixing:

- Grilles
- Bars
- Shelters
- Playground Equipment
- Security Lighting
- CCTV Systems
- Road Signs

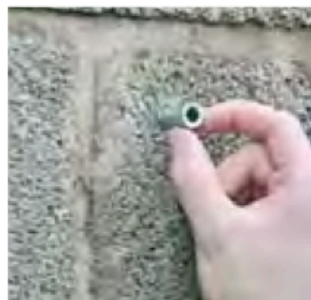
and more . . .

HOW TO INSTALL SHIELD ANCHORS (BOTH TYPES)

A. Pre-drill base material



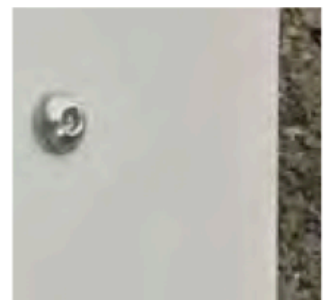
B. Insert Anchor shield



C. Position fixture, tighten bolt into shield



D. Secure removable fixing

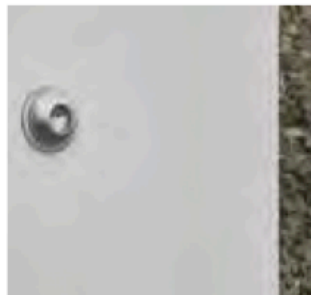


EXTRA INSTALL STEPS FOR DRILLOUT VERSION ONLY

E. Drill out Hex socket using standard HSS drill



F. Secure permanent fixing





TOOLING



Tooling

Most of our security fasteners and fixings require a matching driver for installation and removal. Shown below are sizes and styles of those we keep in stock for use with our screws. Other styles and bespoke tooling can be manufactured to your specifications.



Security Tooling

MAGNETIC SCREWDRIVER

SOLD IN SINGLES



- Standard Magnetic Screwdriver
- Storage area in handle
- 1/4" Hex drive for interchangeable bits



- Silent Ratchet Magnetic Screwdriver
- Storage area in handle
- 1/4" Hex drive for interchangeable bits

2-HOLE TOOLING

SOLD IN SINGLES

1/4" Hex Insert Bit



Sizes available
TH3 TH4
TH5 TH6
TH7 TH8

One-Piece Screwdriver



Sizes available
TH3 TH4
TH5 TH6
TH7 TH8
N8 N14



2-Hole

DRIVER SIZE	TO SUIT	No.4	No.6	No.8	No.10	No.12	No.14		
	SELF TAPPERS	M3	M3.5	M4	M5		M6	M8	M10
TH3		•							
TH4			•						
TH5				•					
TH6					•				
TH7						•			
TH8							•		
N8								•	
N14									•



PIN HEX TOOLING

SOLD IN SINGLES

25mm Insert Bit



Sizes available
 H20 H30
 H40 H50
 H60 H80
 2mm 2.5mm
 3mm 7/32"
 3/16" 5/16"

50mm Insert Bit



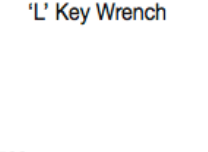
Sizes available
 H20
 H30
 H40

One-Piece Screwdriver



Sizes available
 H20
 H30
 H40

'L' Key Wrench



Sizes available
 H20 H30
 H40 H50
 H60 H80 H100
 2mm 2.5mm
 3mm 7/32"
 3/16" 5/16"



Pin Hex

DRIVER SIZE	TO SUIT	SELF TAPPERS	No.6		No.8	No.10	No.12	No.14			
	MACHINE SCREWS	M3	M3.5	M4	M5		M6	M8	M10	M12	
H20		●									
H30			●								
H40				●	●	●	●				
H50								●			
H60									●		
H80											●

6-LOBE PIN TOOLING

SOLD IN SINGLES

25mm Insert Bit



Sizes available
 T8 T10
 T15 T20
 T25 T27
 T30 T40
 T45

50mm Insert Bit



Sizes available
 T10 T15
 T20 T25
 T27 T30

One-Piece Screwdriver



Sizes available
 T10 T15
 T20 T25
 T30

'L' Key Wrench



Sizes available
 T10 T15
 T20 T25
 T27 T30
 T40 T45
 T50 T55



6-Lobe Pin

DRIVER SIZE	TO SUIT	SELF TAPPERS	No.4	No.6 ^{BH}	No.6 ^{CSK}	No.8 ^{BH}	No.8 ^{CSK}	No.10	No.12	No.14		
	MACHINE SCREWS	M3				M4	M5		M6	M8	M10	
T10		●	●									
T15				●	●							
T20						●						
T25							●					
T27								●				
T30									●			
T40										●		
T45												●

Security Fasteners



ALB Fasteners bvba

The professional way of fixing

Essestraat 15
B - 8550 Zwevegem
Belgium

Tel : +32 56771981
Fax : +32 56771982
info@alb.be
www.alb.be